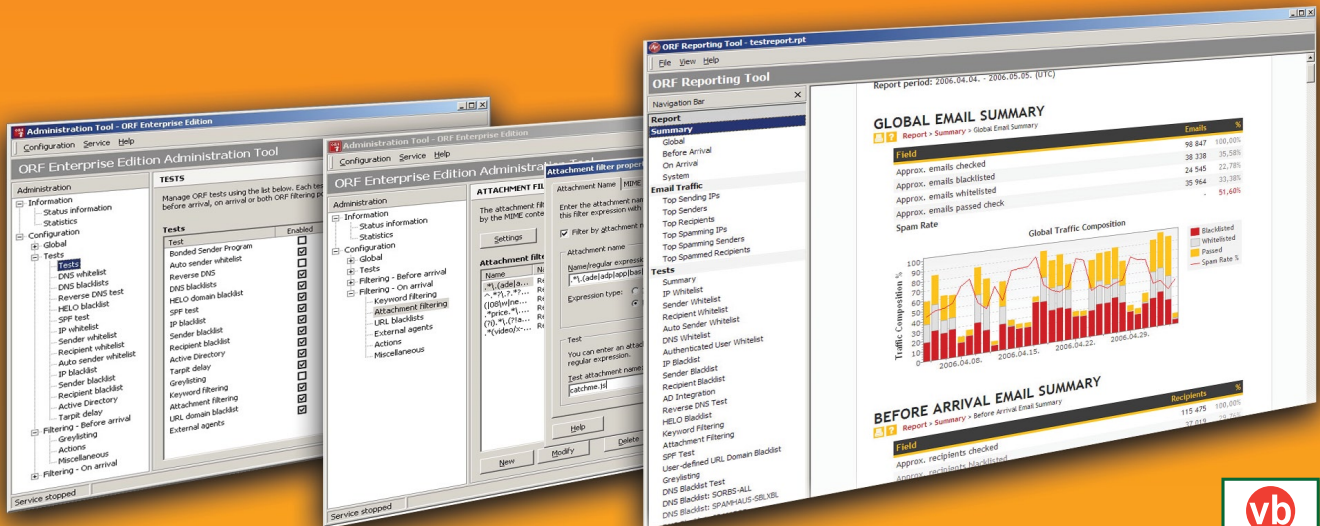


# ORF

## ENTERPRISE EDITION

# YOUR SIMPLE SOLUTION FOR SPAM FILTERING

ORF is a spam filter for Microsoft® Exchange servers and the IIS SMTP Service



## Features

- » 99%+ detection rate\*
- » As low as zero false positives\*
- » “Before Arrival” filtering
- » 10 tests to maximize performance
- » Seamless 3rd party integration

\* Tested and verified by Virus Bulletin's VBSpam qualification program (May 2010). 249,511 emails, 99.13% catch rate with 0.00% false positives

## Benefits

- » Maximize your work performance
- » Minimize lost legitimate mails
- » Save network resources
- » Customize to your security needs
- » Integrate simply into your network



### Outstanding performance

Due to its design, ORF does not require extensive processor and memory resources. An average server hardware can be used to deal with millions of e-mails a day.



### Software based anti-spam solution

Eliminate the need for expensive hardware based solutions. ORF provides the same feature package without the need to install and maintain complex pieces of hardware.



### World class support

Vamsoft prides itself in its efforts to create and maintain a world class personalized support program that improves the user experience. From debugging to settings optimization, Vamsoft's expert staff is there to help.



### Advanced monitoring and reporting

ORF produces detailed, customisable logs that can be browsed and filtered by a built-in log viewer. Real-time statistics and detailed printable reports help to fine-tune performance and understand your email traffic better.

# YOUR SIMPLE SOLUTION FOR SPAM FILTERING

**ORF**  
ENTERPRISE EDITION

## Lightweight yet powerful

ORF integrates best-in-class filtering methods that rival those of any enterprise spam filters to ensure maximum detection and low false positive rates. The large array of test eliminates the need for redundant spam filtering techniques and provides out of the box, high level protection.

Test	Effectiveness	Agressiveness
Reverse DNS	High	None / Low
DNS Blacklists	Excellent	Low / Moderate
HELO Domain Blacklist	High	Low / Moderate
SPF Test	High	None / Low
Greylisting	Excellent	Moderate
Keyword Blacklist	High	None / Low
URL Domain Blacklist	Excellent	Low
Charset Blacklist	High	Low
Honeypot	High	Low
DHA protection	High	Low / Moderate

## Dual filtering points model

One of ORF's unique features is to filter emails both before email arrival and on email arrival. Blacklist tests performed by ORF can be assigned to Before Arrival, On Arrival or both filtering points. It is useful, for example, to bounce emails sent to non-existent local recipients before arrival, while performing DNS blacklist tests at the On Arrival filtering point, saving valuable bandwidth and network resources in the process.

## Top 10 reasons why companies use ORF

1. Light weight product with little footprint that rivals any hardware based counterpart
2. Hands-off, maintenance free. Once installed and configured properly, it just works.
3. ORF is licensed on a per server basis. It is the best price/value offer out there
4. The interface is simple yet powerful. All controls are at your fingertips
5. Easy to install and upgrade
6. Full blown feature package that fulfils all spam filtering needs
7. Documentation is concise, up-to-date and easy to follow
8. Regular updates to the software means adaptability to new threats
9. Receive prompt and friendly response to your support inquiries.
10. You can spend your valuable time worrying about real issues. Leave spam to ORF

## Contact Information

### ORF Business Development

Andras Sudy  
andras.sudy@vamssoft.com

Phone: (+36) 1 279 2299  
Fax: (+36) 1 279 1260

[www.vamssoft.com](http://www.vamssoft.com)

[orf@vamssoft.com](mailto:orf@vamssoft.com)

## System Requirements

- Microsoft® Windows 2000, 2003, 2008 or 2008 R2 Server (both 32-bit or 64-bit)
- Microsoft® IIS SMTP Service or Microsoft® Exchange (2000, 2003, 2007, 2010, including SBS). Exchange 2007 roles supported: Hub Transport, Edge Transport.
- Microsoft® Internet Explorer® 6 or newer
- 15Mb disk space for program and help files